

# The 56th Annual AIBD Design Competition



Photos by Tim Arrowood

## Designer's Choice

Each year we ask those in attendance at the AIBD National Convention to be the judge. Throughout the course of this event they reviewed the entries and placed a vote for the Designer's Choice Award. Everyone there may have noticed it taking a bit longer than in the past as competition entries were up 60 percent over last year.

**Bill Grant  
Grant and Grant Home Design  
Brevard, North Carolina**

The entry chosen by the designers was also recognized by the judges in the Custom Luxury – 4001 to 5000 s.f. Category. A timber frame constructed winner, this entry flawlessly utilized space

and the extensive stone detailing melded the interior with the exterior. The home is nestled within its natural environment and appears as though its inhabitants would feel at ease in its spaces.

Sponsored by:



Photos by Roger Wade

## Best of Show

**Randy Kaatz of Classic Log Homes  
Walt Landi of High Country Builders  
Bend, Oregon**

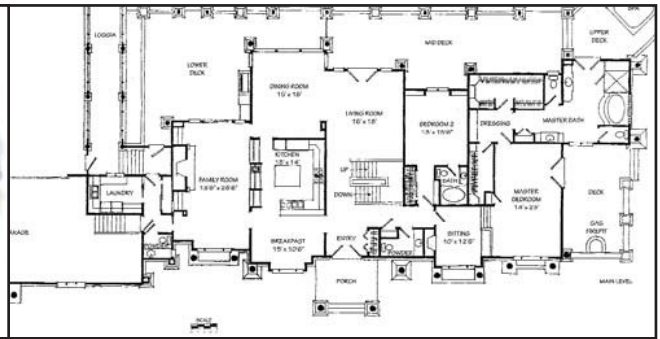
In the Custom Luxury, 5001 to 6500 s.f. category we began to list the number of amenities found in this exceptional design. To continue, that list, let's add the princess castle positioned below the stairs for the owner's

daughter to play and finish with a medieval coat of arms that disappears into the wall with a push of a button revealing a hidden wine room. With all that, what makes this a winning design is the wonderful use of natural materials in a structural manner. As one enters the home, the view from the Foyer through the Living and Dining Rooms is spectacular.

The cedar trees have been honed and installed so that they actually appear to be growing from the stone pedestals in which they are set. The glass is installed so tightly to the side of the trunk columns that it must truly feel as though the house is completely open to the outdoors.



# Working Drawings



Illustrations by Ken Pieper

The judges spent over four hours deliberating on this category—the most time spent on any category.

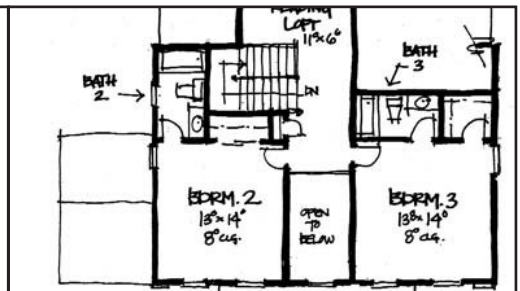
**First Place**  
**Ken Pieper**  
 Ken Pieper and Associates, Inc.  
 Evergreen, Colorado

From cover page to bolder placement plans and elevations, this entry displayed outstanding organization and impeccable

detail, including nearly 30 pages of interior planning, elevation and detailing drawings as well as a multitude of exterior finishing details and trim details.



# Design Solution

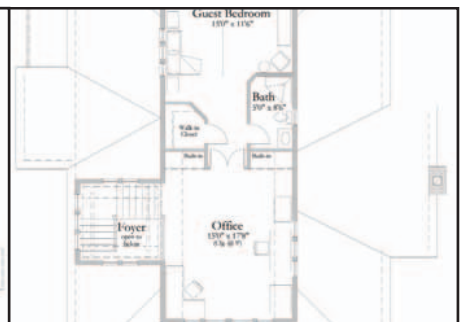
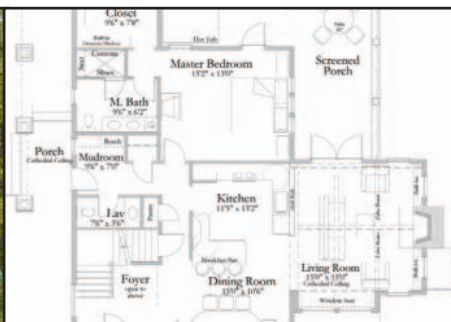


Illustrations by K. Hylas Stemen

**First Place**  
**K. Hylas Stemen**  
 Residential Design Solutions  
 Columbus, Ohio

This next entry provided a design solution that was very inventive and interesting. The garage was placed at the rear of the home proving a more traditional view from the roadway. The positioning of the terrace and living spaces utilizes the principal view towards the rolling hills. Even the master suite

is orientated towards the scenery and complimented by a private porch with the same view. Watching the sun rise from this home will be pleasure yet the breakfast room is placed so that natural light will fill the space without being overly harsh. *Hanley Wood has offered to market this winning entry in one of their consumer publications.*



Illustrations by Gianna M. Bradford

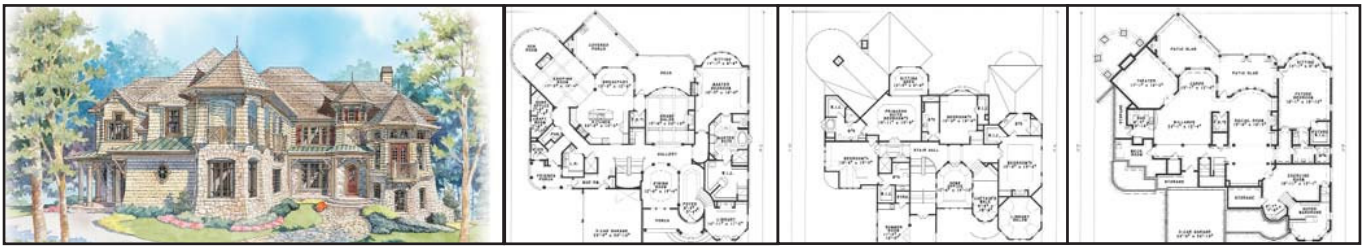
# Un-Built Designs under 3250 s.f.

**First Place**  
**Gianna M. Bradford**  
 Home Designing Service, Ltd.  
 Windsor, Connecticut

This design consists of an open floor plan for entertaining, function, and a warm inviting feeling. The Kitchen, Dining

and Living Rooms layout allows for high-quality traffic flow. Double French doors to the screened porch add entertaining space and harmonize a connection to the interior spaces. The plan is expandable, allowing for a third bedroom. A pergola on the side entrance serves to cover a walkway leading to a future garage.

Illustrations by  
Garrell Associates Inc.



## Un-Built Designs 3251 feet and above

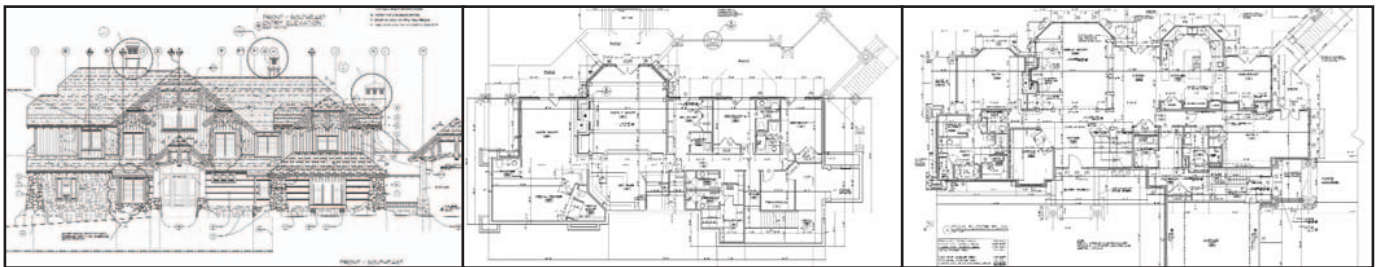
First Place

Michael Garrell and James Klippel  
Garrell Associates, Inc.  
Suwanee, Georgia.

The design of this American stick home was focused on a family with teens or a multi-generational family. A home where all may meet together and then each find a place of privacy. The use of a multi-level entrance to a Juliet Balcony makes for an interesting vantage point that is proposed to look

over a community park. The fitting of an elevator into the floor plan addresses the multi-generational aspect of the design and permits the occupants to age in place if they please. The master suite appears very comfortable and functional with its access to the rear terrace, a fireplace and sitting room, a multi-level wardrobe and exercise space.

Illustrations by  
Ken Pieper



## Published Designs

First Place

Ken Pieper  
Ken Pieper and Associates, Inc.  
Evergreen, Colorado

Published in the April 2004 issue of the Robb Report, this 10,600 square foot mountain retreat has eight bedrooms, 12 bathrooms and three master suites, a massage and steam room, a guesthouse with a cowboy theme, and a kids' room with bunk

beds that any city slicker would envy. The home's themes range from cowboy heritage to Mission style. The main rooms have floor to ceiling windows and ornamental railings that frame the stairs and upper bridge like a sculpture.

Sponsored by:



Photos by  
S. Chapman

## Renovations Exterior Upgrade

First Place

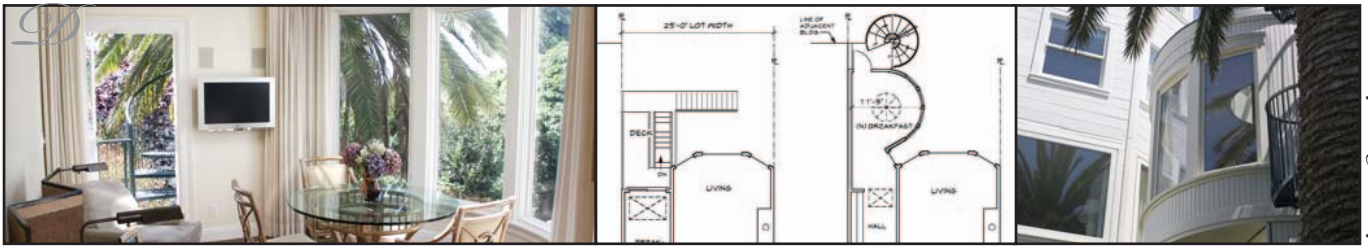
Carole Chapman  
Chapman Home Design  
Healdsburg, California

This façade was an outstanding improvement to the existing home particularly because the designer was commissioned to return the structure to its original 1920's craftsman style. Various owners and transformations through the years took it far from its previous identity. The addition of the traditional front porch, the removal of the existing bay window and the

pergola rear design accomplish the goal of regaining the building's identity and improved the overall appearance of the home from every perspective.



Sponsored by:



Photos by Greg DeLory

## Renovations Finished Space under 1500 s.f.

**First Place**

**Greg DeLory**

**Greg DeLory, AIBD**

**San Francisco, California**

The impact of this creative room addition to the original floor plan is probably not fully given the justice it deserves in a photograph. The judges had to really study this project to appreciate its significance and the difficult challenges overcome by the designer. Located in an urban neighborhood bordering

the San Francisco Presidio National Park, an extension of an adjacent property blocked the morning light into this home's small breakfast area. The addition of the new morning space was complicated by lot coverage regulations, property setbacks and the fire egress from the two floors above. The designer's solution resulted in an outstanding room addition that avoids all the issues, is aesthetically pleasing from both the interior and the exterior, and directs the view to the plush park landscaping.



Photos by Phoenix Photographic

## Renovations Finished Space 1501 s.f. and over

**First Place**

**Wayne E. Visbeen**

**Visbeen Associates**

**Grand Rapids, Michigan**

This remodel transformed a once formal cottage into one filled with casual elegance. The use of colors, textures and built-in elements created a comfortable feel for this residence. The focus of the exterior is that of a shingle style home and

by adding color with stone and stained wood details, the home was made much more approachable. Entry and function were remodeled by flipping the garage to a motor court where visitors could be greeted with the front door and entry experience. Each room and corridor enriches the experience of this winning design.



Photos by Peter Fowmes

## Model Homes 3250 s.f. and under

**First Place**

**Michael Garrell and James Klippel**

**Garrell Associates, Inc.**

**Suwanee, Georgia**

This Italianate design modeled after homes from the late 19th century, is specifically inspired by the North Carolina piedmont. Its asymmetrical façade with the intersecting low pitched gables comprise about 20 percent of the style's original structures. The horizontally sided home is underpinned with brick foundations and incorporates a large entry porch.

The windows, cornice, columns, porches and doorways are all detailed in the Italianate style that follows the informal rural model of the picturesque movement. Though historically motivated, the floor plan has been modernized for today's market and site conditions. Particular attention was placed on the garage location and the creative orientation to preserve the style while creating a plan that can be utilized to the fullest throughout a community of narrowly developed lots.

Photos by  
Kim Sargent



## Model Homes 3251 feet and above

**First Place**  
**Dan Sater**  
 The Sater Design Collection  
 Bonita Springs, Florida.

The home's small spaces are intimately planned, such as the entry foyer to the master suite and the gallery from the garage, along with the elegant treatments, tasteful accessories, soft artificial and natural lighting.

Every amenity for fabulous family living and entertaining is accentuated inside this highly crafted European home, from wide-open rooms that meld with the outdoors to richly detailed private spaces. No aspect is left unattended, particularly when it comes to creating masterful environments for entertaining.



Photos by Mark Scheyer

## Custom Luxury – under 2999 s.f.

**First Place**  
**David Cox**  
 Aziza Design  
 Houston, Texas

Guests first encounter a free standing studio with private bath and a courtyard to the left before actually reaching the entrance of the home by way of a covered walkway. The outstanding use of exterior space around the interior carries on with a garden off the kitchen and a generous rear yard for the children. Vaulted ceilings, timber trusses and bead board continue the theme throughout this unique urban farmhouse.

Traditionally designed homes bring with them certain challenges that are not easily overcome. Here, the designer not only met the challenges of an irregular lot with alley access, but provided site features usually unheard of in these project types.



Photos by Dave Bixel

## Custom Luxury – 3000 to 4000 s.f.

**First Place**  
**Wayne E. Visbeen**  
 Visbeen Associates  
 Grand Rapids, Michigan

that book ended the site, the design lined up with the home to the northeast yet steps back dramatically to support the home to the southwest. The stair stepped configuration opens the home to more views and sites from the family room and master suite extending to the lake while keeping the patio private for entertaining. The low pitched roof on this two story building keeps it from overwhelming the adjacent properties. The overhangs, beams and natural colors reinforce the homes blending with its surroundings and results in a year round home with a vacation bungalow attitude.

In concept, the would-owners of this home fell in love with the warmth and attention to detail of the Green and Green style for the exterior, but wanted a brighter, more updated twist for the interior. The designer developed a combination that was sensitive to both without abandoning the traditions of the true arts and crafts style. Being aware of the existing homes

Photos by  
Greg DeLory

## Custom Luxury – 4001 to 5000 s.f.

First Place

Greg DeLory

Greg DeLory AIBD

San Francisco, California.

In order to begin with a 28 foot wide lot on a steep hill, an existing structure had to be razed. Visually, this dreadful existing structure was detracting from the little attractiveness that could be found in the adjacent buildings. The designer of this home justly enhanced the streetscape by proposing this three story

urban infill mission. The designer was inspired by the architecture of Corsican towns and the traditional Mediterranean shapes and materials refined by the French influence on the island. Large north facing windows on two levels provide unobstructed views of San Francisco and the bay beyond. Three separate decks and balconies, each facing a different overlook, serve distinct purposes; the top floor deck, accessed from the dining room, provides an opportunity for an outdoor repast while viewing the city, the bay, and the mountains beyond.



Photos by Roger Wade

## Custom Luxury – 5001 to 6500 s.f.

First Place

Randy Kaatz of Classic Log Homes

Walt Landi of High Country Builders

Bend, Oregon

This year's apparent theme continues with another beautiful rustic mountain estate home. From the towel warming drawer, steam shower, dumbwaiter, salt water aquarium, and television mirror, to the Jacuzzi tub filled by water that falls from ceiling,

the list of interesting elements found in this home is impressive. But the use of natural materials in the finishes and in the method of construction earned this entry the top position. Immediately upon entering the home, fabulous views are presented through very cleverly assembled and massive fenestrations and the unique timber framed details are expertly continued throughout the home.



Photos by CJ Walker

## Custom Luxury 6500 s.f. and over

First Place

Dan Sater

The Sater Design Collection

Bonita Springs, Florida.

Based on a neo-Mediterranean scheme with a modified Spanish context, the villa-style plan opens traditionally boxed spaces to easy breezes and satisfying views. The desire to create

a dwelling that paid homage to Palm Beach's great Spanish influenced villas while embracing contemporary design ideas and technologies resulted in this grand home. Incorporating modern amenities and elements like outdoor living spaces and the designer's signature corner-less sliding glass walls make this home a place of relaxation and comfort.

# AIBD would like to thank our sponsors!

# Other Award Winners



## Working Drawings

The Honor Award of Excellence  
Ken Pieper  
Ken Pieper and Associates, Inc.  
Evergreen, Colorado  
The Honor Award  
Darren Ryker  
Ryker Design  
Bakersfield, California

## Design Solution

The Honor Award of Excellence  
Ken Pieper  
Ken Pieper and Associates, Inc.  
Evergreen, Colorado

## Un-Built Designs under 3250 s.f.

The Honor Award of Excellence  
Chuck Harrison  
Easton, Pennsylvania

## Un-Built Designs 3251 s.f. and over

The Honor Award of Excellence  
Chuck Harrison  
Easton, Pennsylvania  
The Honor Award  
Michael Garrell and James Klippel  
Garrell Associates, Inc.  
Suwanee, Georgia.

## Published Designs

The Honor Award of Excellence  
Ken Pieper  
Ken Pieper and Associates, Inc.  
Evergreen, Colorado  
Honor Award  
Ken Pieper  
Ken Pieper and Associates, Inc.  
Evergreen, Colorado

## Commercial Designs

The Honor Award of Excellence  
Randy Kaatz of Classic Log Homes  
Walt Landi of High Country Builders  
Bend, Oregon  
The Honor Award  
Lucia, Kassik, and Monday, Inc.  
Winter Park, Florida

## Renovations Exterior Upgrade

The Honor Award of Excellence  
Paul and Mike Studer  
Studer Residential Designs  
The Honor Award  
Michael Klement  
Architectural Resource  
Ann Arbor, Michigan

## Lighting Design

The Honor Award  
Ken Pieper  
Ken Pieper and Associates, Inc.  
Evergreen, Colorado

## Renovations Finished Space under 1500 s.f.

The Honor Award of Excellence  
C. Lyle Scott  
Designs for Living  
Bend, Oregon  
The Honor Award  
Darren Smith  
Sun Design Remodeling Specialists, Inc.  
Burke, Virginia

## Renovations Finished Space 1501 s.f. and over

The Honor Award of Excellence  
Michael Klement  
Architectural Resource  
Ann Arbor, Michigan  
The Honor Award  
Greg DeLory  
Greg DeLory, AIBD  
San Francisco, California

## Model Homes 3250 s.f. and under

The Honor Award of Excellence  
Michael Garrell and James Klippel  
Garrell Associates, Inc.  
Suwanee, Georgia

## Model Homes 3251 feet and above

The Honor Award of Excellence  
Paul and Mike Studer  
Studer Residential Designs  
Cold Spring, Kentucky  
The Honor Award  
Alan Kent  
Kent and Kent, Inc.  
Houston, Texas

## Custom Luxury – under 2999 s.f.

The Honor Award of Excellence  
Mark Ash  
Cumming, Georgia  
The Honor Award  
Richard Davis  
Shoreline Designs  
Jupiter, Florida

## Custom Luxury – 3000 to 4000 s.f.

The Honor Award of Excellence  
Bill Grant  
Grant and Grant Home Design  
Brevard, North Carolina  
The Honor Award  
Susan S. Glasner  
Dataw Island, South Carolina

## Custom Luxury – 4001 to 5000 s.f.

The Honor Award of Excellence  
Bill Grant  
Grant and Grant Home Design  
Brevard, North Carolina  
The Honor Award  
Joe Ahmann  
Ahmann Design, Inc.  
Hiawatha, Iowa

## Custom Luxury – 5001 to 6500 s.f.

The Honor Award of Excellence  
Lucia, Kassik and Monday, Inc.  
Winter Park, Florida  
The Honor Award  
Dan Sater  
The Sater Design Collection  
Bonita Springs, Florida

## Custom Luxury 6500 s.f. and over

The Honor Award of Excellence  
Richard Guzman  
R.G. Design, Inc.  
Bonita Springs, Florida.  
The Honor Award  
Stephen R. Hullinger  
RWRD  
Houston, Texas

## AIBD would like to thank everyone who made this design competition possible!

### AIBD Design Competition Chairperson

*Mike Battaglia* creates “one of a kind” custom homes throughout the southeastern United States, the Midwest and pacific coast. He has an Associates Degree in Architectural Engineering and is a past president of the AIBD Ohio Society. Michael requires each project to have a strong “partnership” type relationship between the owner, builder and himself, the designer.

### AIBD Design Competition Judges

*A.J. Paron-Wildes* has acquired significant experience working in the design/build industry and with the residential owner. She, and her work, is featured on HGTV and PBS. Over sixteen publications have published articles of her projects. She has been honored with accolades from numerous organizations like NKBA, NARI, Chrysalis Awards, Professional Remodeler Magazine, Remodeling Magazine, and ASID.

*Lyle Breeze* of Breeze and Associates operates his design firm on the west of Florida and caters to very discerning clientele. He holds a degree in Art Appreciation and began his career as a building designer as an apprentice under a very well respected Florida AIBD member. He has applied his knowledge and experience to create many new and improve older classical and traditional style homes.

*Jennifer Pearce* serves as Associate Publisher, Editorial Development, for the Consumer Magazine Division of Hanley Wood LLC. As North America’s leading publisher of home plans, Hanley Wood serves an active home plan buying market through its home plan magazines, book publishing and two web sites—eplans.com and Dream Home Source, which offer the largest collection of house plans online.